



Komar Auger-Pak®

Quality Made
in the USA



Since 1977

Heavy-Duty Industrial Cardboard Compactor

EM-F Series



EM-6040F with plugin hopper.

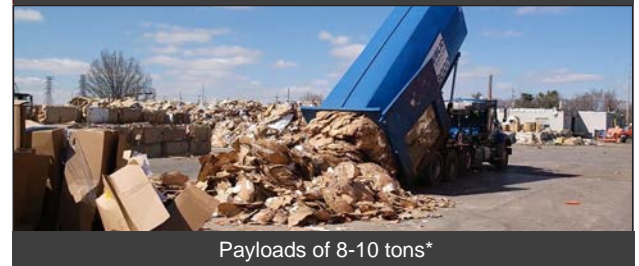
- Located outside your facility
- Quickly processes meter-fed large corrugated flats
- Tears up product for efficient compaction and pre-baling
- Shreds and compacts in one machine
- Maximum uptime with minimal maintenance
- Connects to a standard receiving container
- Clean, quiet electric drive, no hydraulic leaks

Komar EM-F Auger-Pak® Series

The Komar EM-F Auger-Pak® units incorporate an aggressive ripper feed shaft and a powerful compression auger to process large cardboard flats efficiently. This design provides a very high throughput while achieving a superior compaction density. The output is highly recyclable, as the shredded piece size promotes more effective baling at the recycling center. The EM-F Series Auger-Pak® system is electromechanically driven. A variable speed drive powers the ripper feed shaft. The variable feed rate and the ripper shaft's auto-reverse promote self-cleaning and improved feeding. The compaction auger is powered by a cycloidal drive and a heavy-duty chain and sprocket reduction, providing clean, quiet power for maximum compaction.



Corrugated Flats in Processing Chamber



Payloads of 8-10 tons*

* Meter feeding is essential for maximum compaction when materials are fed with a tipper or self-dumping hopper.

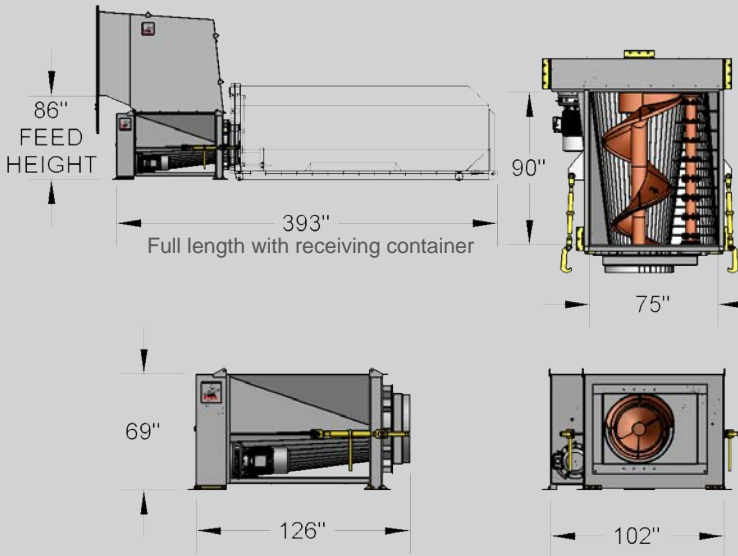
Groveport, OH

(614) 836-2366

www.komarindustries.com

info@komarindustries.com

MODEL: EM-6040F



Dimensions and process data for reference only

Processing Specifications

Horsepower Ripper	40
Horsepower Auger	60
Tons per Hour	3-5
Feed Type	Metered
Receiving Container	40-50 cu. yd.
Tons per Container	8-10*

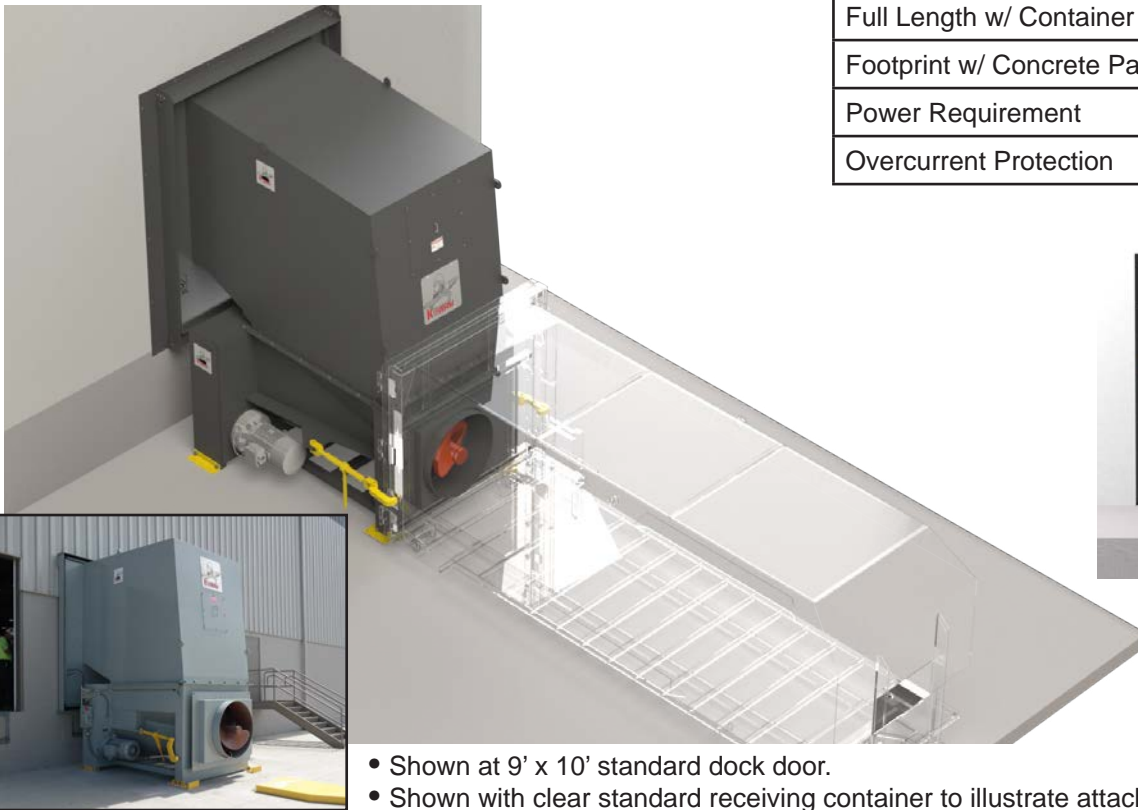
*Tonnage affected by feed method

Machine Specifications

Footprint (L x W x H)	126" x 102" x 69"
Chamber Size (L x W)	90" x 75"
Full System Weight (lbs.)	24,600
rpm / Torque (ft.lbs) Auger	13.57 / 23,230
rpm / Torque (ft.lbs.) Ripper	19.77 / 10,262

INSTALLATION

Dock Enclosure



- Shown at 9' x 10' standard dock door.
- Shown with clear standard receiving container to illustrate attachment.

Installation Requirements

Full Length w/ Container	393"
Footprint w/ Concrete Pad	417" x 126"
Power Requirement	3 phase, 460/480 V, 60 Hz
Overcurrent Protection	200 amp MCP type breaker

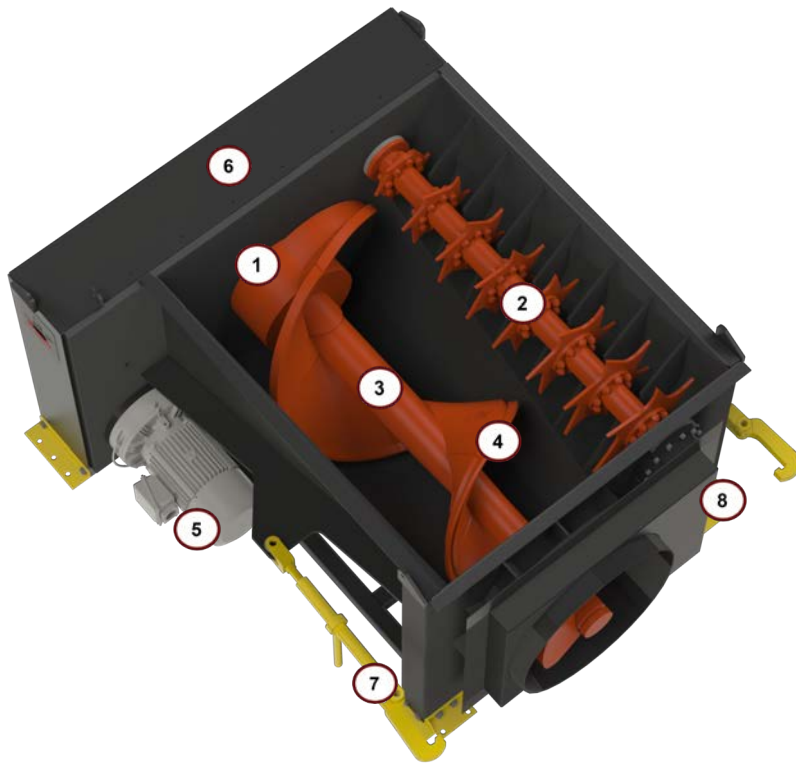


Inside View



Komar Auger-Pak®

EM-F Series Technology



① Patented Solid Lube Bearing Support System

Allows for the use of the biggest and most powerful auger screws in the industry, resulting in maximum compaction force.

② Ripper Feed Shaft

The Ripper Feed Shaft grabs large sheet material and tears it up while feeding it to the main discharge screw.

③ Tapered Solid Alloy Steel Shaft ④ Cast Alloy Steel Flights

Using the highest quality components to construct our auger screws extends service life. The mass and shape of the cast flights increase overall strength and durability while providing more efficient material delivery to the receiving container. Our patented tapered shaft uniquely distributes force along the shaft, minimizing stress on the bearings and maximizing screw life.

⑤ Cycloidal Drive with 500% Shock Load

Don't judge a drive strictly by the motor's horsepower, especially when you plan to process industrial materials. A high shock load rating is also important in giving the compactor the ability to crush through large loads without damage to the drive.

⑥ Worry-Free Chain and Bearing Lubrication System

The engineered, automatically lubricated chain, coupled with the self-lubricating bearing system with automatic grease purge, reduces routine maintenance.

⑦ Ratchet Binders ⑧ Container Adaptor

The auger compacts directly into a standard roll-off receiving container typically provided by your local hauler and meets ANSI and OSHA specifications.