



# Komar Auger-Pak®

Quality Made  
in the USA



Since 1977

**Heavy-Duty Industrial Cardboard Compactor**

**EM-F Series**



EM-6040F with plugin hopper.

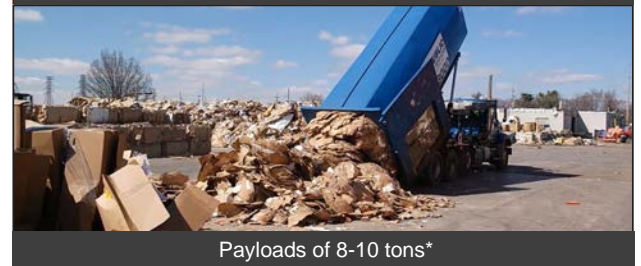
- Located outside your facility
- Quickly processes meter-fed large corrugated flats
- Tears up product for efficient compaction and pre-baling
- Shreds and compacts in one machine
- Maximum uptime with minimal maintenance
- Connects to a standard receiving container
- Clean, quiet electric drive, no hydraulic leaks

## Komar EM-F Auger-Pak® Series

The Komar EM-F Auger-Pak® units incorporate an aggressive ripper feed shaft and a powerful compression auger to process large cardboard flats efficiently. This design provides a very high throughput while achieving a superior compaction density. The output is highly recyclable, as the shredded piece size promotes more effective baling at the recycling center. The EM-F Series Auger-Pak® system is electromechanically driven. A variable speed drive powers the ripper feed shaft. The variable feed rate and the ripper shaft's auto-reverse promote self-cleaning and improved feeding. The compaction auger is powered by a cycloidal drive and a heavy-duty chain and sprocket reduction, providing clean, quiet power for maximum compaction.



Corrugated Flats in Processing Chamber



Payloads of 8-10 tons\*

\* Meter feeding is essential for maximum compaction when materials are fed with a tipper or self-dumping hopper.

Groveport, OH

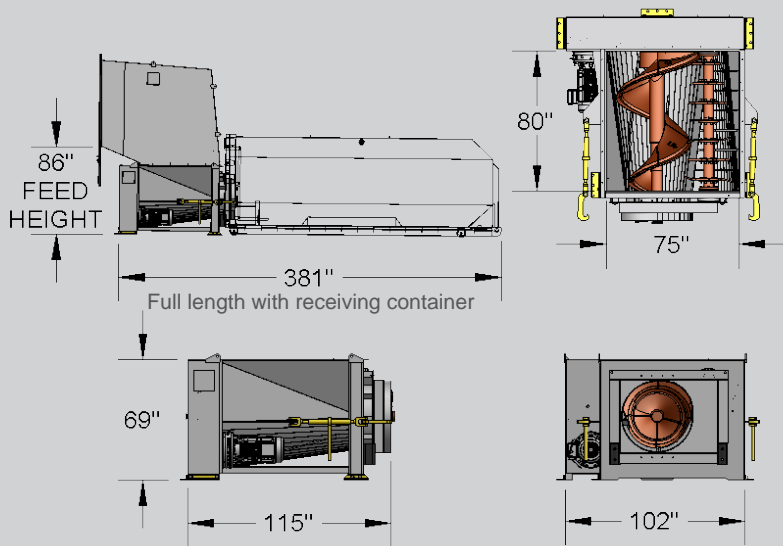
(614) 836-2366

[www.komarindustries.com](http://www.komarindustries.com)

[info@komarindustries.com](mailto:info@komarindustries.com)



# MODEL: EM-4020F



Dimensions and process data for reference only

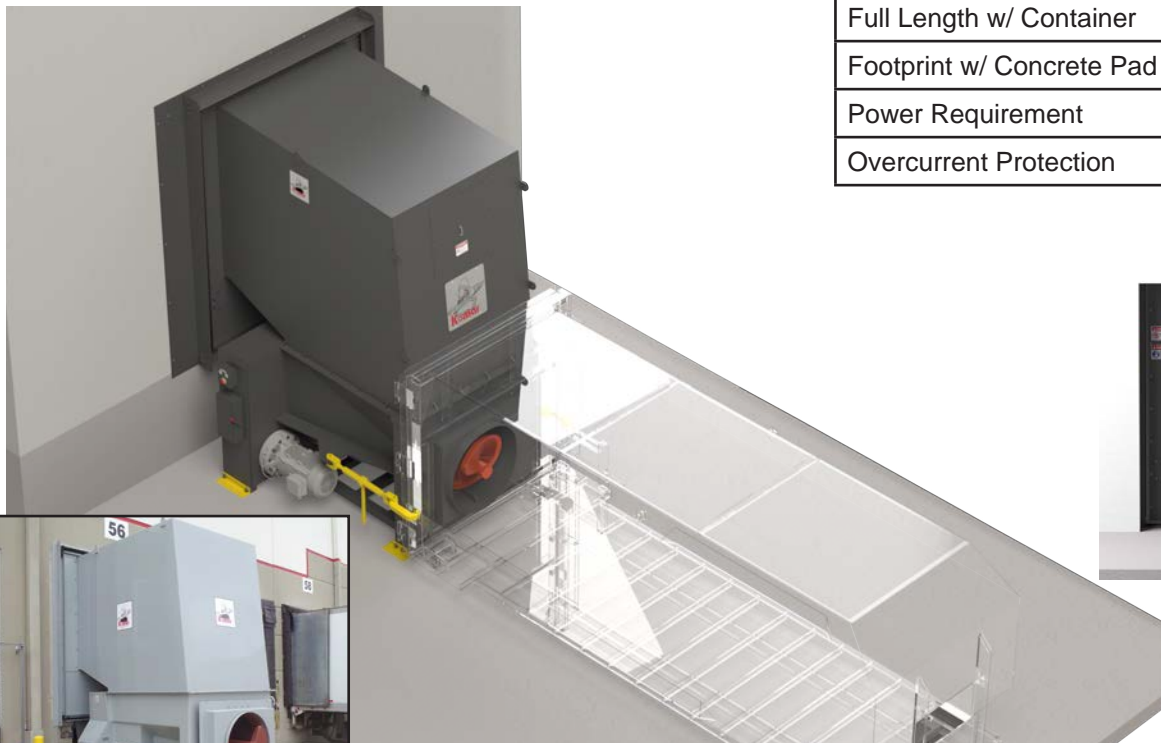
Processing Specifications	
Horsepower Ripper	20
Horsepower Auger	40
Tons per Hour	2-3.5
Feed Type	Metered
Receiving Container	40-50 cu. yd.
Tons per Container	8-10*

\*Tonnage affected by feed method

Machine Specifications	
Footprint (L x W x H)	116" x 102" x 69"
Chamber Size (L x W)	80" x 75"
Full System Weight (lbs.)	21,400
rpm / Torque (ft.lbs) Auger	9.27 / 22,665
rpm / Torque (ft.lbs.) Ripper	16.76 / 6,267

## INSTALLATION

### Dock Enclosure



- Shown at 9' x 10' standard dock door.
- Shown with clear standard receiving container to illustrate attachment.

Installation Requirements	
Full Length w/ Container	381"
Footprint w/ Concrete Pad	405" x 126"
Power Requirement	3 phase, 460/480 V, 60 Hz
Overcurrent Protection	125 amp MCP type breaker



Inside View

Groveport, OH

(614) 836-2366

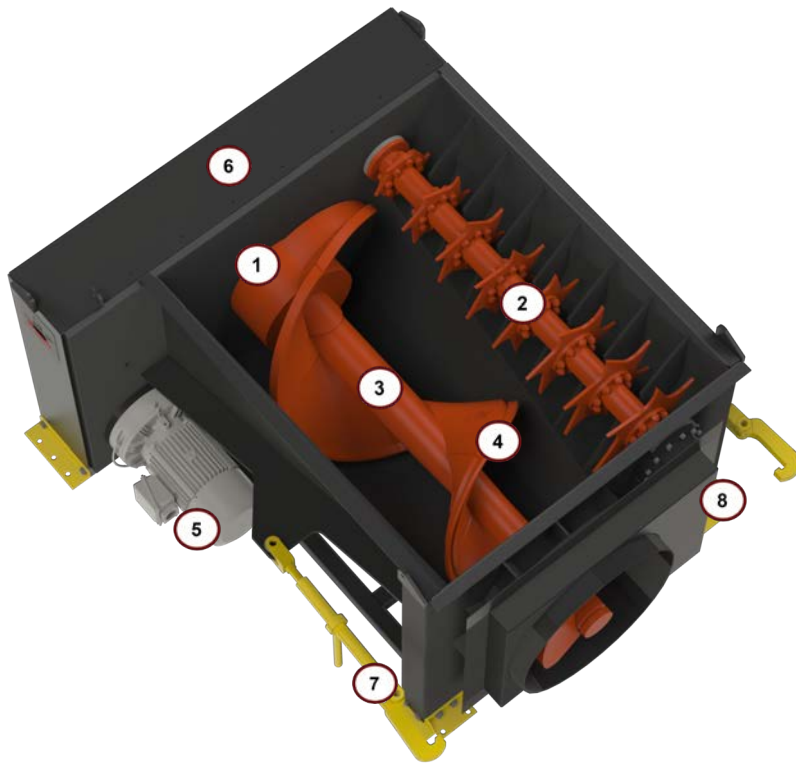
[www.komarindustries.com](http://www.komarindustries.com)

[info@komarindustries.com](mailto:info@komarindustries.com)



# Komar Auger-Pak®

*EM-F Series Technology*



## ① Patented Solid Lube Bearing Support System

Allows for the use of the biggest and most powerful auger screws in the industry, resulting in maximum compaction force.

## ② Ripper Feed Shaft

The Ripper Feed Shaft grabs large sheet material and tears it up while feeding it to the main discharge screw.

## ③ Tapered Solid Alloy Steel Shaft    ④ Cast Alloy Steel Flights

Using the highest quality components to construct our auger screws extends service life. The mass and shape of the cast flights increase overall strength and durability while providing more efficient material delivery to the receiving container. Our patented tapered shaft uniquely distributes force along the shaft, minimizing stress on the bearings and maximizing screw life.

## ⑤ Cycloidal Drive with 500% Shock Load

Don't judge a drive strictly by the motor's horsepower, especially when you plan to process industrial materials. A high shock load rating is also important in giving the compactor the ability to crush through large loads without damage to the drive.

## ⑥ Worry-Free Chain and Bearing Lubrication System

The engineered, automatically lubricated chain, coupled with the self-lubricating bearing system with automatic grease purge, reduces routine maintenance.

## ⑦ Ratchet Binders    ⑧ Container Adaptor

The auger compacts directly into a standard roll-off receiving container typically provided by your local hauler and meets ANSI and OSHA specifications.