



THE TIGER HYDRO-SHEAR

innovative waste processing systems

MATERIALS

PROCESSED:

- Tires
- Pallets
- Drums
- Metal
- Plastic
- Rubber
- Paper
- Wood Waste
- Organic Waste
- Cable
- White Goods
- Cloth
- Corrugated Cardboard
- Demolition Waste
- Carpet
- Electronic Scrap

UTILIZED For:

- In Plant Waste
- Recycling Systems
- Product Recovery
- Product Destruction
- Plastics Reprocessing
- Security Shredding
- Metals Reduction
- Pulp and Paper
- Waste Reduction Systems
- Tire Reduction Systems
- Computer Hardware & Electronic Products

STANDARD FEATURES:

- High Strength Steel Alloy Shaft. (4140 Heat Treated)
- Proprietary Bearing Protection
- Segmented Cleaning Fingers
- Torsion Construction, Heavy Plate Frame
- Cutters: 4140 Through Hardened 50 to 55 Rc
- Gears: Alloy Steel 4340 Pre-Heat Treated
- Hex Shafts
- Extra Bearing Protection: Double Lip Seals, False End Plates on Both Ends of Cutting Chamber
- Easy Service: Remove End Plates for Cutter Replacement
- Severe Shock Protection
- Programmable Logic Controller (PLC) Based Control System
- Load Sensing, Auto Reversing Shafts
- IEC Electrical Controls
- * Patented Pro Cutter Locking System

OPTIONAL FEATURES:

- Cutter Thickness & Hook Arrangement
- Custom-Designed Support Stand & Hoppers
- Service Platforms w/Ladder
- Remote Control Console with Stand
- Power Feed Rollers
- Hydraulic Infeed Hopper Ram
- Material Infeed / Outfeed Equipment
- Standard or Custom-Built Hopper
- Diesel Drive
- Stainless Steel Construction



Model HS3632-100 Shown with Enclosed Hopper, Stand and Hydraulic Power Unit



Model HS4426-75

KOMAR Tiger Hydro-Shears are designed for heavy duty processing of difficult unknown or unsorted materials, as well as feed systems which require frequent starts and stops of the shredding action or where batch loading or material feeds cause frequent overload conditions. The Tiger Hydro-Shear provides for smooth operation as well as the best shockloading ability to protect the system from non-shreddables.

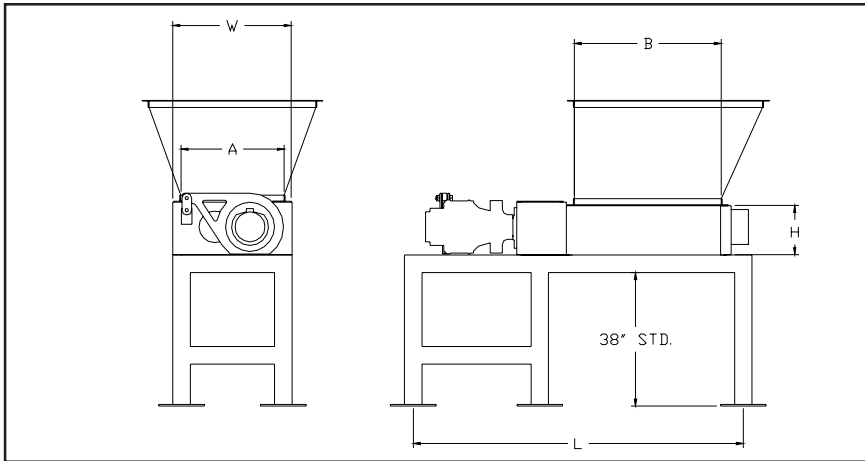
KOMAR INDUSTRIES, INC.

4425 Marketing Place
Groveport, Ohio 43125

U. S. and Foreign Patents Issued and Pending
TEL: (614) 836-2366 FAX: (614) 836-9870



Visit Komar on the World Wide Web: komarindustries.com
Or E-mail us at: info@komarindustries.com



TECHNICAL DATA

MODEL	HS3626	HS3632	HS6342	HS7552
E Motor HP	30/40/50	50/75/100	150/200	300/400
Power Requirement	480 V 60 Hz	480 V 60 Hz	480 V 60 Hz	480 V 60 Hz
Infeed Charge (B A)	36" x 26"	36" x 32"	63" x 42"	75" x 52"
Shaft	4-1/2"	6-3/8"	7"	9"
Cutter Thickness	1"	1-1/2"	2"	2"
Dimen. of shredder (L W H)	102" x 34" x 15"	106" x 45" x 18"	118" x 52" x 20"	136" x 74" x 24"
Weight approx. (lbs.)	5,500	10,200	28,000	57,500
MODEL	HS4426	HS5236	HS7542	HS10065
E Motor HP	40/50/75	75/100/150	150/300	300/600
Power Requirement	480 V 60 Hz	480 V 60 Hz	480 V 60 Hz	480 V 60 Hz
Infeed Charge (B A)	44" x 26"	52" x 36"	75" x 42"	100" x 65"
Shaft	4-1/2"	6-3/8"	7"	10"
Cutter Thickness	1"	1-1/2"	2"	2"
Dimen. of shredder (L W H)	108" x 35" x 15"	124" x 45" x 18"	130" x 52" x 20"	162" x 90" x 27"
Weight approx. (lbs.)	6,000	16,000	34,000	65,500

*Specifications are subject to change.

Video Demonstrations Available

*** " Pro Cutter Locking System"**

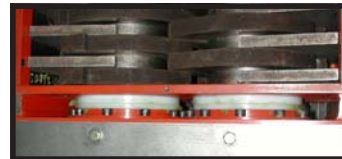
The Komar * Patented "Pro Cutter Locking System" addresses a major problem found in most Shear Shredders, that of cutter stacks becoming loose. The conventional nut and bolt system cannot apply enough force to hold the stacks tight resulting in poor performance and damage to the shaft. The P.C.L.S. solves the problem with a compact integrated bearing and locking system, which has been demonstrated to provide 900% more force than the conventional nut & bolt method, thus providing for less need for maintenance and more uptime.



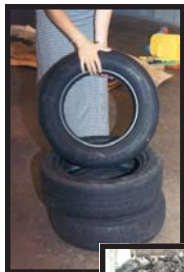
Patent Numbers:

* 6250577, 6092753, 6393699 6000852

" Proprietary Bearing Protection System"



Komar utilizes a Proprietary Bearing Protection System that insulates the bearing and seal from the cutting chamber and away from the bearings and is the key to longer uptime and lower operating cost. The system includes heavy splash plates, end cutter configurations deflection, shield with grease purge air space and specialized seal guards.



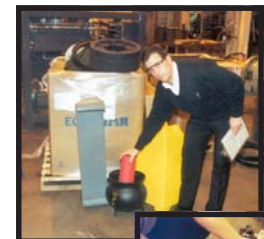
Tires



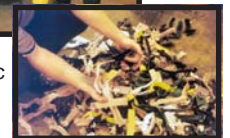
MSW



Steel Drums



Hard Plastic



Komar Industries, Inc. custom engineers, manufactures, installs, and services complete waste processing systems for virtually all types of solid, semi-solid, hazardous, and non-hazardous materials and waste streams.

Call or write: **KOMAR INDUSTRIES, INC.**
4425 Marketing Place
Groveport, OH 43125

Tel: 614 - 836 - 2366
Fax: 614 - 836 - 9870
International Calling Code for United States is 1



KI-27070518