



THE VIKING II hydro-auger processor

Industrial Volume Reduction with Low Operating Cost

innovative waste processing systems

MATERIALS PROCESSED:

- Product Destruction
- 55-Gallon Drums (empty or full)
- 300-Gallon Liquid Packs
- Cable Reels (up to 60")
- Oversized Pallets (up to 70")
- Wood Crates
- Corrugated Containers
- Fiber Butt Cores
- Packaging Materials
- Hardwood Pallets
- White Goods

UTILIZATION BY:

- Industrial Applications
- Pallet Rebuilders
- Material Recovery
- Energy Recovery Systems
(Industrial, Utilities, etc.)
- Incineration Operations

FEATURES:

- Large infeed hopper for feeding from all sides
- Material discharge doors for controlled retention allow for varying piece size
- Hydrostatic Drive, high-torque, low-horsepower, shock-resistant operation
- Independent, direct driven dual augers counter-rotate
- Shafts vary in speed, torque and direction
- Heavy duty forged steel alloy shafts
- Fast auger changeouts
- Isolated sealed bearings
- Modular designed subcomponents
- Severe shock protection
- High-grade NEMA 4 electrical enclosures
- IEC electrical controls
- Programmable logic controller control



Model GD-3-200 shown

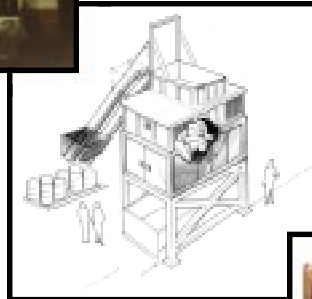
Optional accessories -- see reverse side



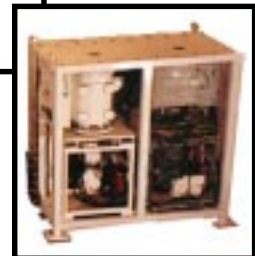
Product Destruction



Easy to maintain screw augers



Doors allow for sizing and blending



Hydrostatic Power Unit

The KOMAR Viking II Hydro-Auger Processor providing primary shredding of industrial construction waste at the lowest on line operating cost of any volume reduction equipment. It operates at low speed with minimum noise, dust and energy requirements in order to handle high volume of difficult oversize bulky materials with high torque, independent counter rotating dual augers for aggressive shredding.

KOMAR INDUSTRIES, INC.

4425 Marketing Place
Groveport, Ohio 43125

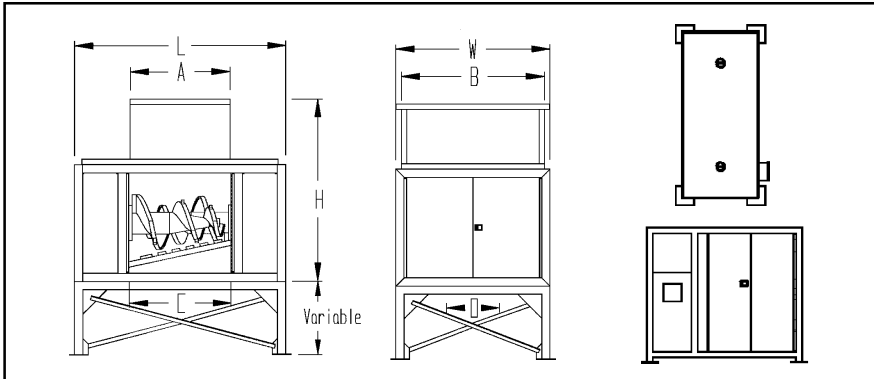
TEL: (614) 836-2366

FAX: (614) 836-9870

U. S. and Foreign Patents Issued and Pending



Visit Komar on the World Wide Web: komarindustries.com
Or E-mail us at: info@komarindustries.com



- ### Optional Accessories
- Custom-Designed Support Stand
 - Service Platform w/Ladder
 - Dust Suppression System
 - Cold Weather Package
 - Material Infeed/ Outfeed Equipment
 - Standard or Custom-Built Hopper
 - Maintenance Contract
 - Diesel Drive
 - Soft Start

| TECHNICAL DATA: LOW SPEED DUAL HYDRO-AUGER | | | |
|--|------------------------|------------------------|------------------------|
| MODEL | DD-3-150 | GD-3-200 | PD-3-200 |
| Electric drive (hp) | 1 - 150 | 1 - 200 | 1 - 200 |
| Voltage | 480 V/ 3 phase / 60 Hz | 480 V/ 3 phase / 60 Hz | 480 V/ 3 phase / 60 Hz |
| Optional Stand | Variable | Variable | Variable |
| Charge Opening | 62" x 70" | 72" x 100" | 86" x 108" |
| Shafts | 2 - 12" tapers to 6" | 2 - 12" tapers to 6" | 2 - 12" tapers to 6" |
| Auger Diameter | 34" tapers to 20" | 42" tapers to 20" | 52" tapers to 24" |
| Auger Speed Range | 18 RPM | 18 RPM | 20 RPM |
| No. of Hydraulic Motors | 2 | 2 | 2 |
| Dimen. of Shredder (LWH) | 98" x 86" x 89" | 172" x 108" x 100" | 200" x 112" x 159" |
| Weight (approx.) | 26,000 | 48,000 | 61,000 |
| Maximum Charge Capacity* | 4 cu. yd. | 6 cu. yd. | 8 cu. yd. |
| HPU dimensions (LWH) | 9' x 5'0" x 9'8" | 9' x 5'0" x 9'8" | 9' x 5'0" x 9'8" |

Throughputs (per hour)**

| | |
|---------------------------------|----------------------|
| In-Plant Waste | 10,500 - 40,000 lbs. |
| Pallets | 20,000 - 50,000 lbs. |
| Wood Dunnage | 15,000 - 50,000 lbs. |
| White Goods | 5,000 - 45,000 lbs. |
| Fiber Butt Cores | 4,000 - 50,000 lbs. |
| 55-Gallon Drums (empty or full) | 2,000 - 6,000 lbs. |
| 300-Gallon Liquid Packs | 2,000 - 35,000 lbs. |
| Cable Reels (up to 60") | 5,000 - 45,000 lbs. |

***Estimates are a result of representative sample testing. Actual throughput rates may vary, dependent upon methods of feed and materials consistency. Throughputs are for reference only -- contact the factory for throughput ratings on specific materials.*

Specifications are subject to change. * Operational volumes will vary with materials and horsepower selection.



Komar Industries, Inc. custom engineers, manufactures, installs, and services complete waste processing systems for virtually all types of solid, semi-solid, hazardous, and non-hazardous materials and waste streams.

Call or write: **KOMAR INDUSTRIES, INC.**
 4425 Marketing Place
 Groveport, OH 43125

Tel: 614 - 836 - 2366
 Fax: 614 - 836 - 9870
 International Calling Code for United States is 1

Video Demonstrations Available